

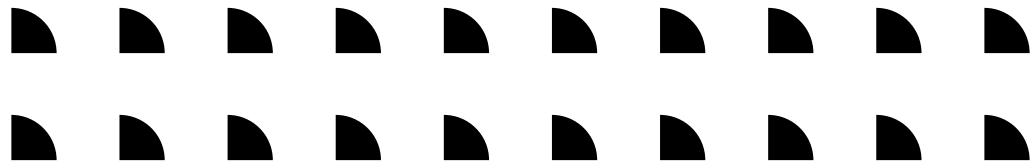


PORTFOLIO

Index

05	Teams
07	Our Clients
10	Our Partners
12	Our Portfolio
13	Food and Beverage
44	Recreational
55	Offices
69	Retail
73	Pavilions





PX is a local kuwaiti found and kuwaiti run design and build firm located in the center of Kuwait City. We specialize in sustainable design solutions and our scope of work ranges from interior and exterior commercial projects to interior and exterior residential projects.

We provide turn key solutions from concept development to total construction and submission.

Principal Architects



Rashed AL-Mubarak

Founder - CEO

Rashed Almubarak is a Kuwaiti architect and a LEED green associate. Rashed is the founder and CEO of PROJX Design & Build Solutions.

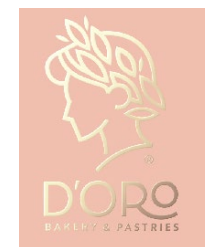


Mohammad Al-Bualian

partner and the design director

Mohammad Alboualayan holds a master's degree in architecture from the University of Oregon. He a partner and the design and creativity director at PROJX.

Our Clients





Our Partners



Architectural Design and
Interior Design



Branding and Advertising
Design



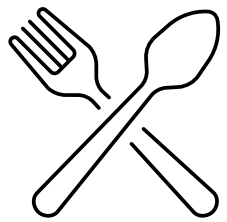
Product Design



Web Design



Landscaping Design



Food and Beverage

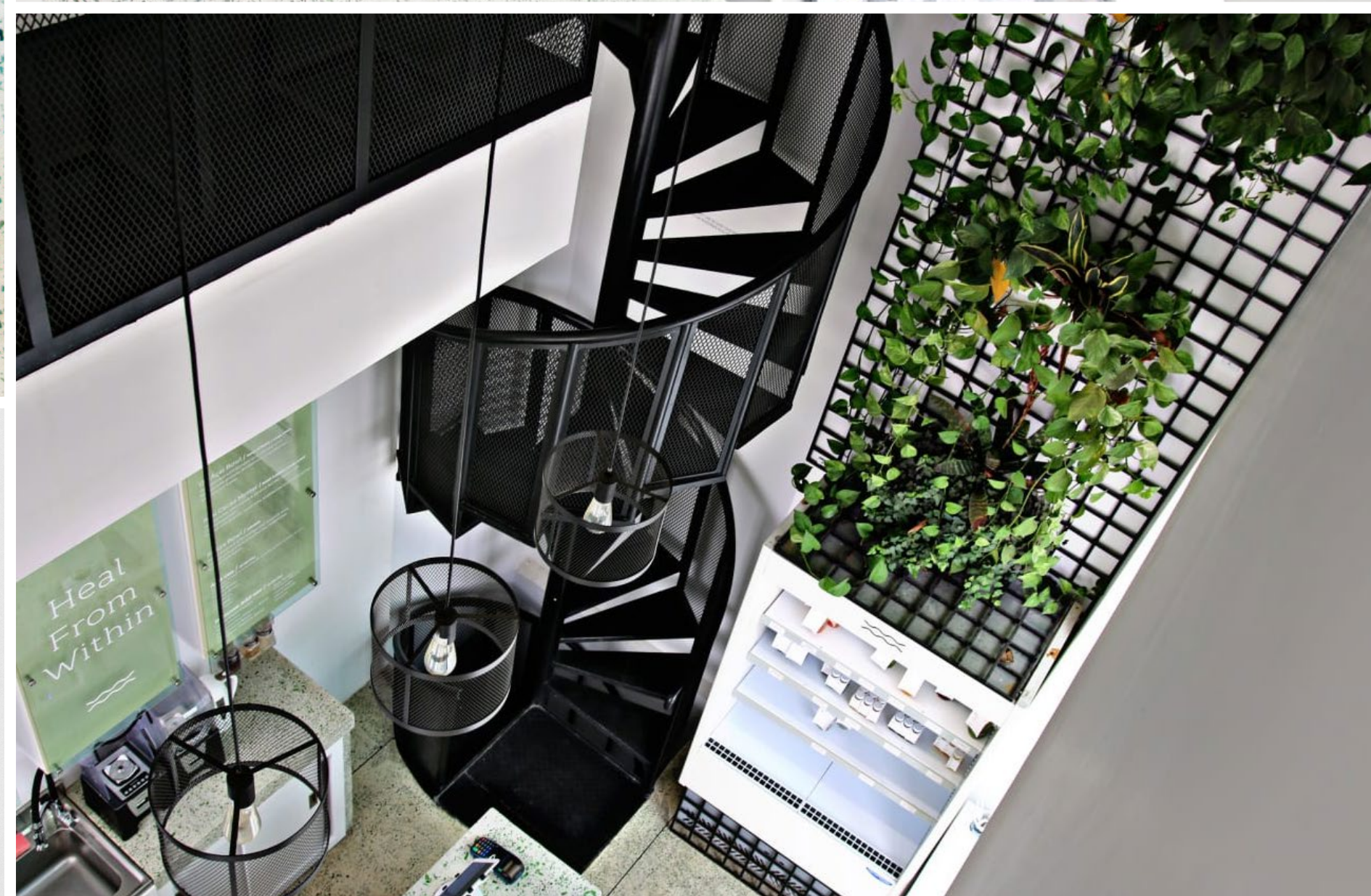
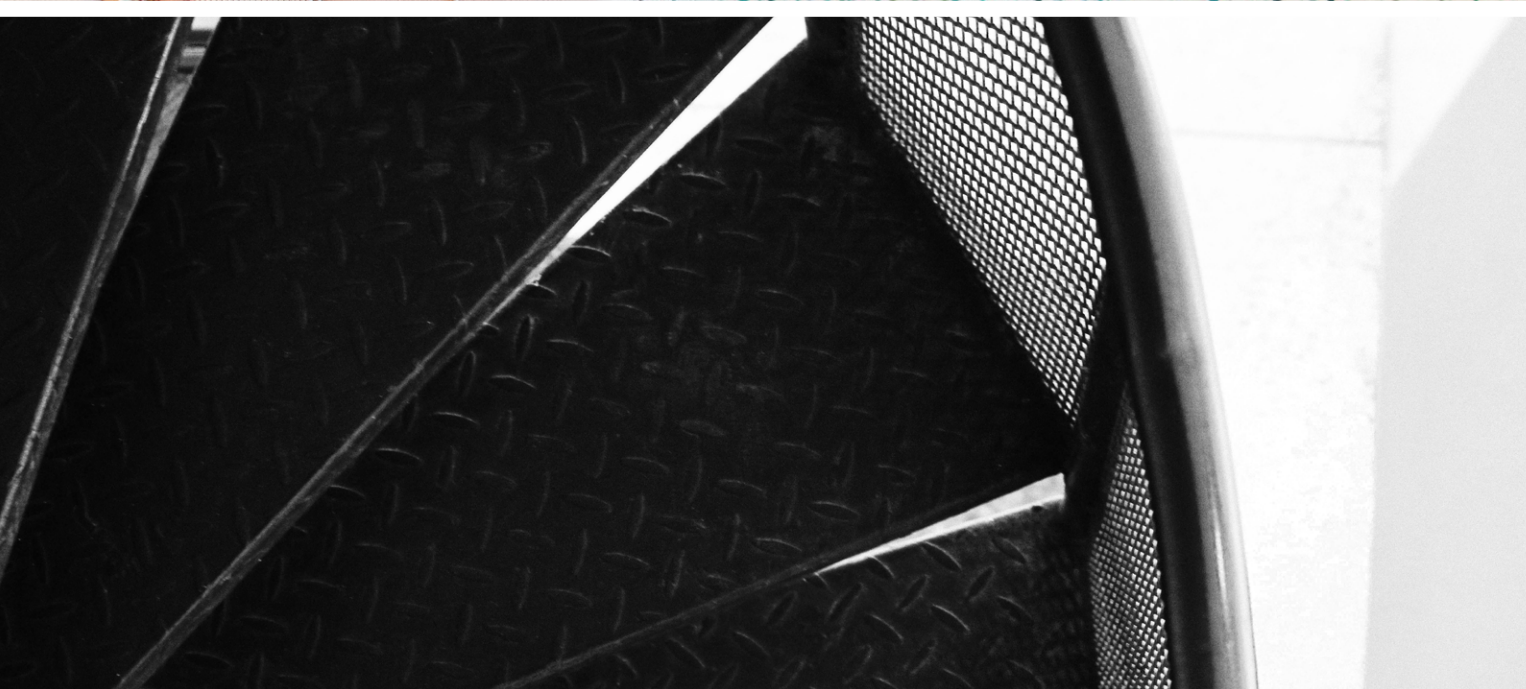


Liquid



This cozy cafe is a 40sqm double height space connected by a spiral steel staircase.

The walls are painted white to make the space seem bigger and welcoming. The terrazzo that was used contains recycled glass from old soda bottles that sparkle when light hits the surface.





MET



Met is a cozy retro inspired cafe and bakery located in Kuwait City. The concept revolved around the central u-shaped bar that was the focal point of the space, displaying all the baked foods.

Seating is on the side walls with a mix of benches and chairs. In the back of the store is a full-fledged bakery that makes up most of the space.





Pie and Co



Pie and Co is a grab and go concept located in Arthia specializing in pastries. The design was inspired by New York brown houses. The brick cladding is arranged in a unique pattern to express the modular nature of brick and to create a dynamic façade that changes with the movement of the sun. In addition, we minimized glazing on the store front and introduced an overhang to minimize solar exposure on the south facing elevation.

This approach creates a comfortable environment for the employees inside.



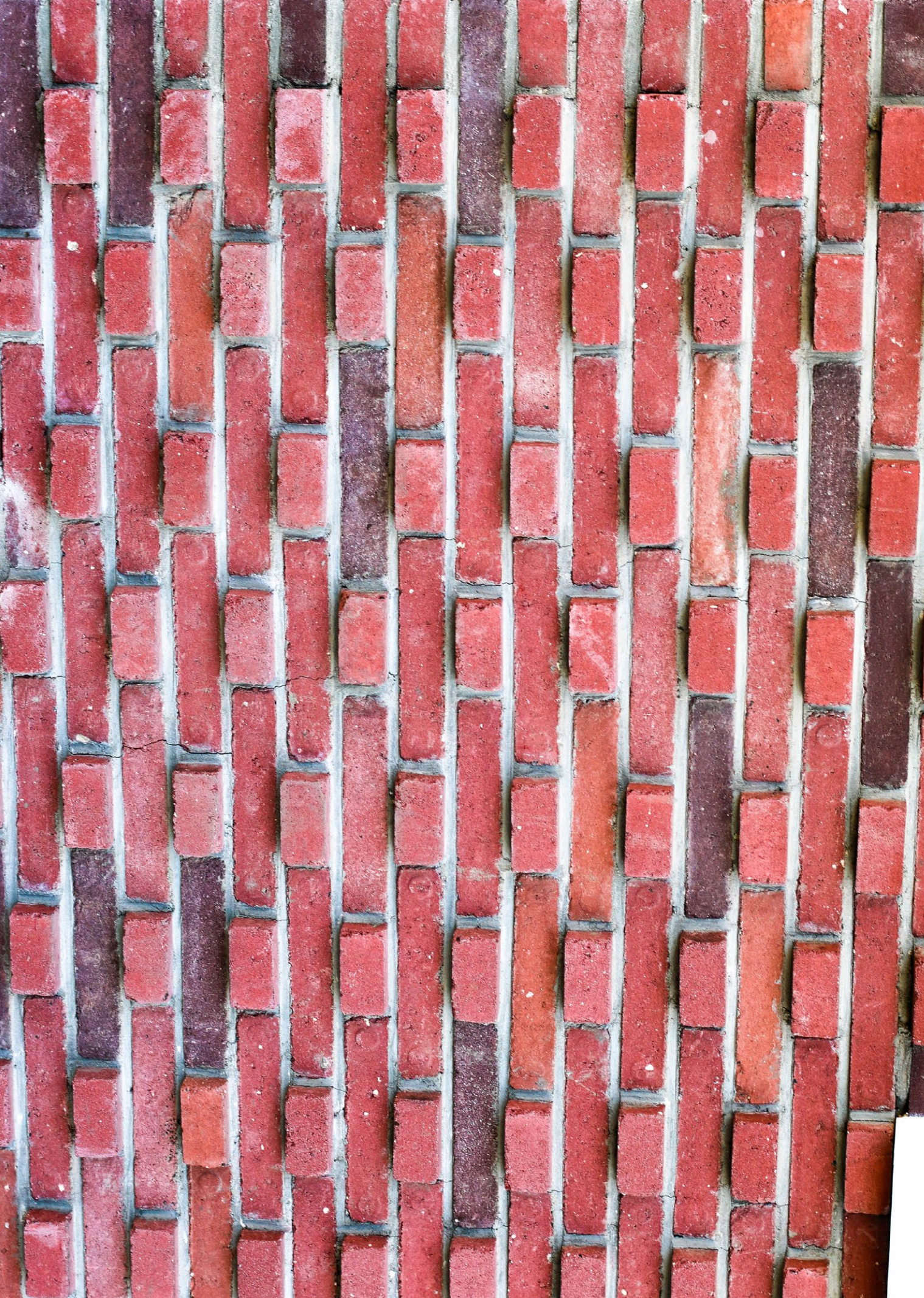


Yelo Pizza



This branch is the first store for Yelo! pizza that set the standard for the brand.

The red patterned brick and the yellow over hangs created beautiful contrast that responds to the brand identity and appeals to the hip and young customers.





Love Bird

LOVEBIRD



Lovebird is solely by driven brand identity, bright blue and yellow. The building stands out from its neighbors and is easily identified and noticed by customers. The concept is a modern grab and go fast food restaurant.

Customers can order from one of the bullet proof glass kiosks or online. Online orders will be picked with special coded lockers that open from both sides allowing maximum efficiency for operation and customer satisfaction.





Lets Coffee



Local coffee shop located in the heart of kuwait city



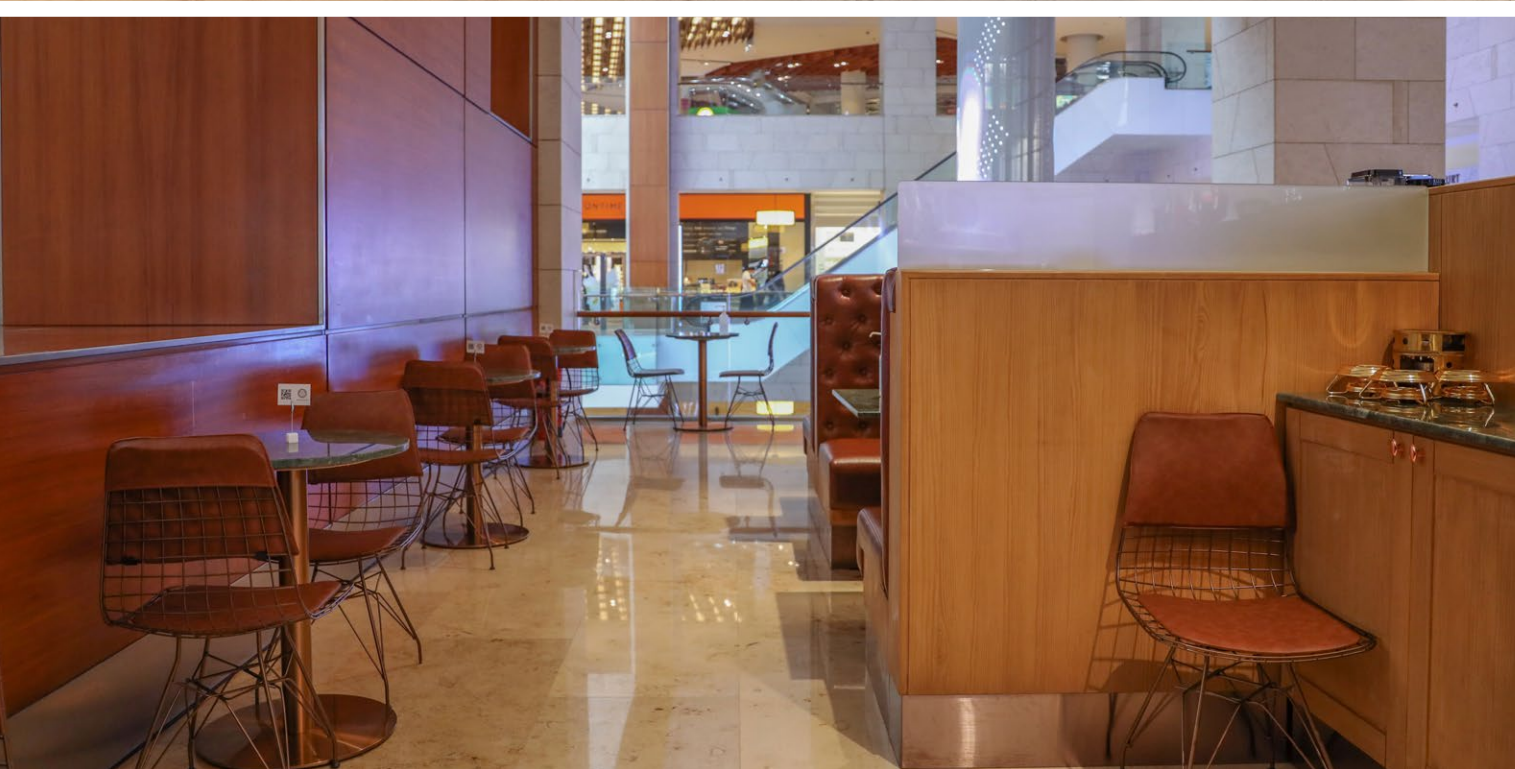


Asuman



Asuman is a Turkish chocolate franchise with multiple branches in Kuwait. Their latest branch will open in 360 Mall in the form of a permanent booth. The client asked to reinterpret the traditional woodwork in their previous stores in a contemporary way that relates to the overall theme of the mall.

Our approach was keeping the traditional theme of the wood work, while introducing cove lights and curve bronze elements to give it a modern look.



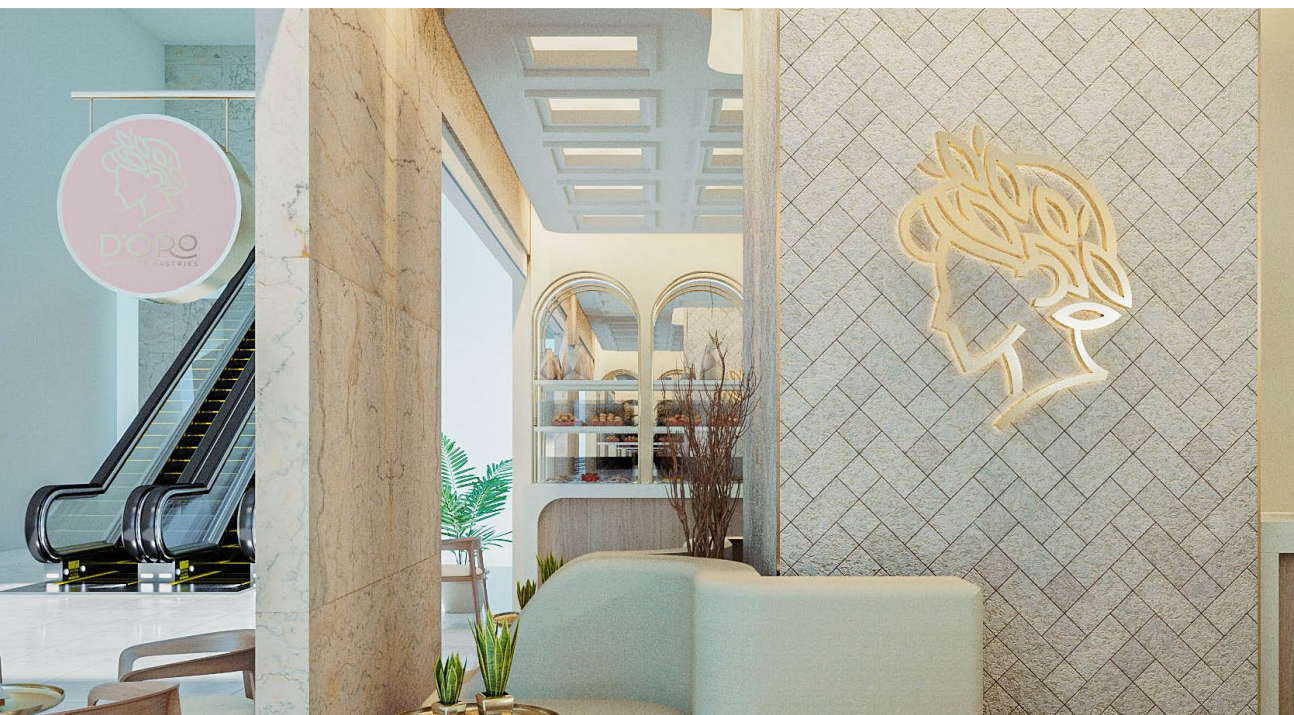


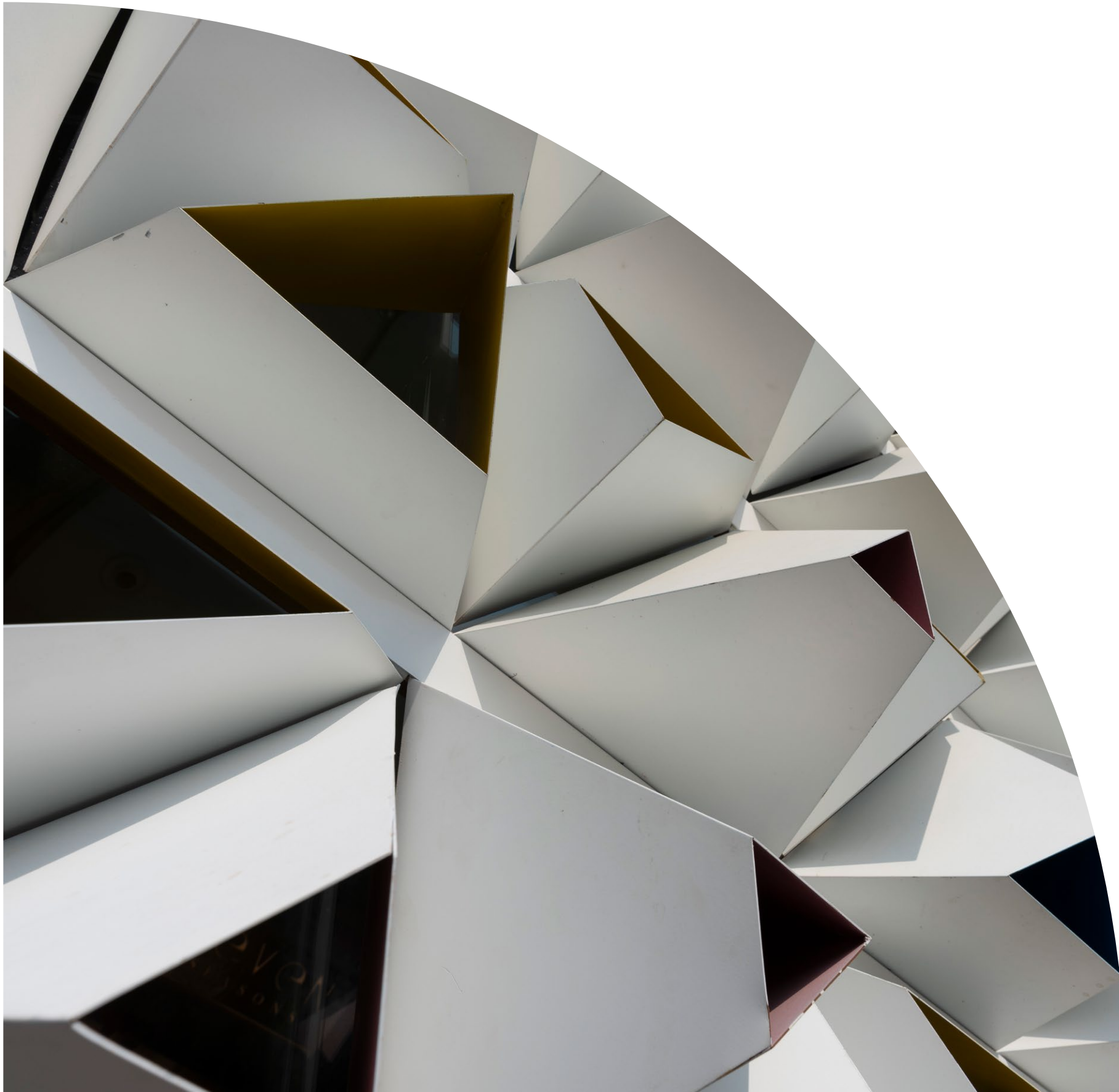
Doro bakery



Doro is a contemporary Italian inspired bakery in Kuwait City. The objective was to create a high end grab and go shop front that also show cased numerous baked goods on steel arched shelving.

The focal point of the design is the ceiling. Complex layers of cove lit plastered décor divide the ceiling into a grid that respond both to the shop layout and to its Italian identity.





Seven Seasons

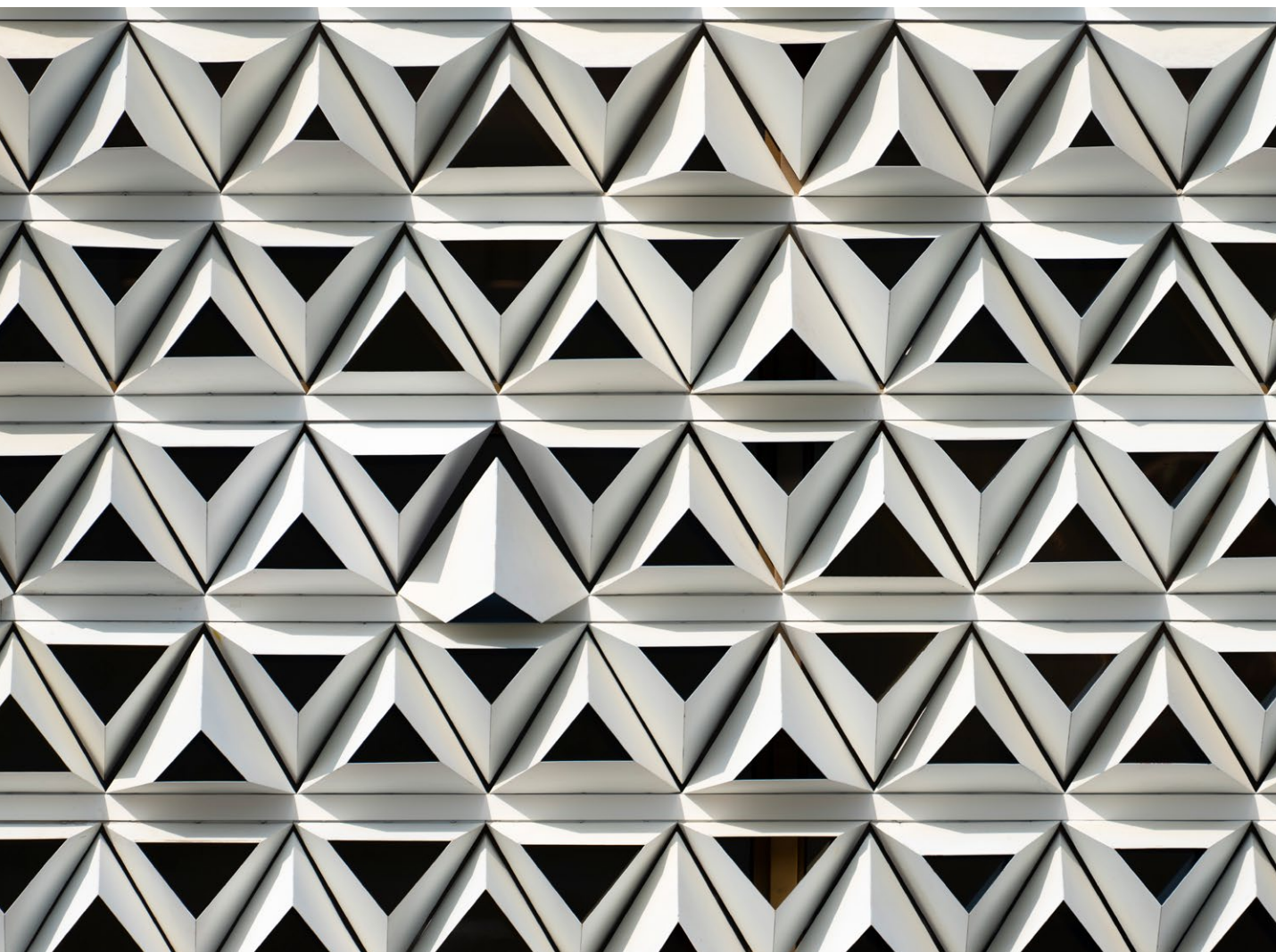


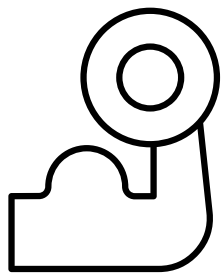
Seven Seasons is a standalone store in a residential area that provides chocolates, flowers, and coffee. It needed a space to be appealing for walk-in customers as they need to browse, purchase or make an order for an event.

The exterior of the store has a recognizable facade and evokes curiosity. The screen also provides the function of shading the store front from the harsh southern light that blasts the storefront throughout the day.

It was inspired by the array of flowers sold inside the store, where the outside is white to blend in with the building, but the interior is brightly colored to offer an unsuspecting surprise.

The interior is designed to be functional to provide all three lines; chocolates, flowers, and coffee in separate counters. the colors remained neutral to allow the products to take front stage.

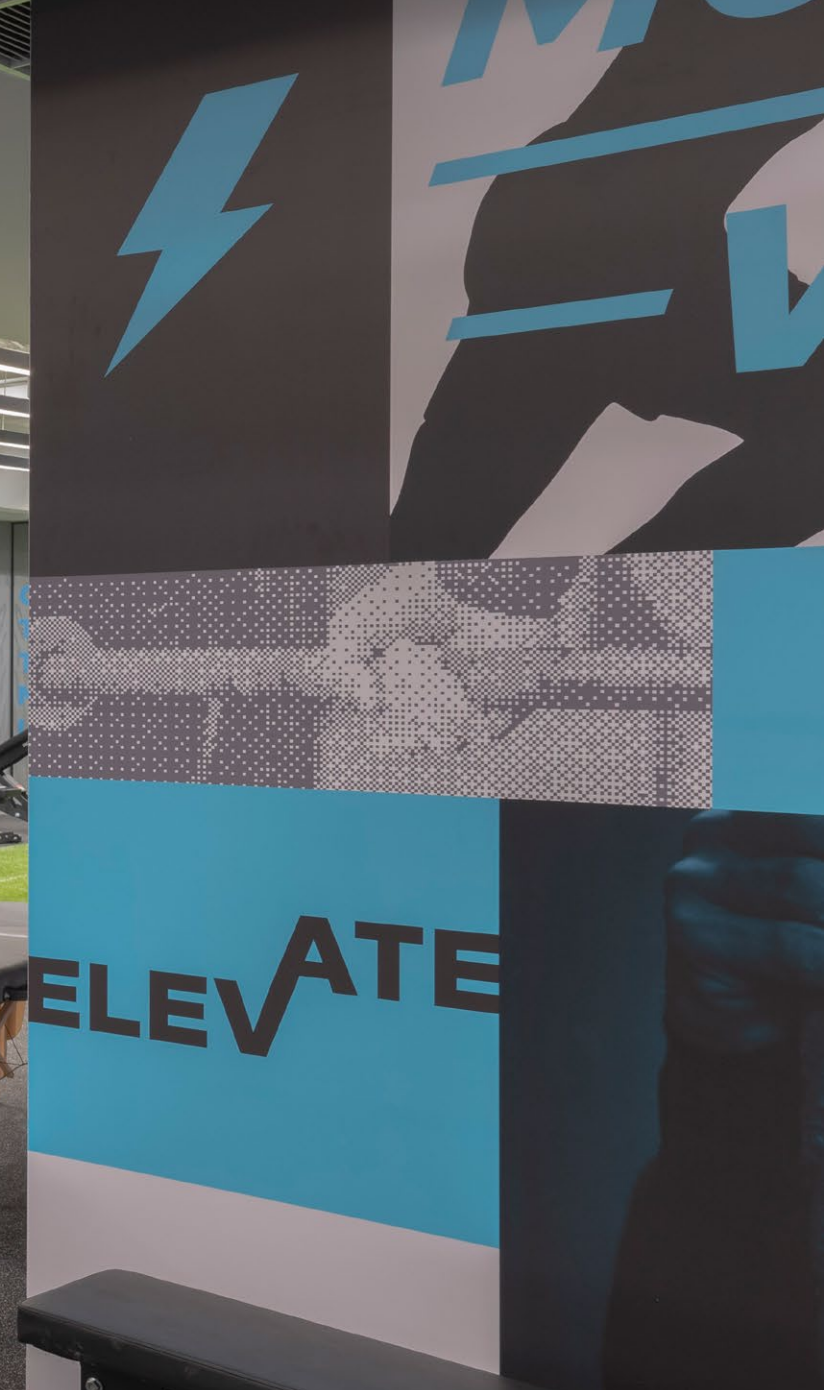




Recreational



Levo

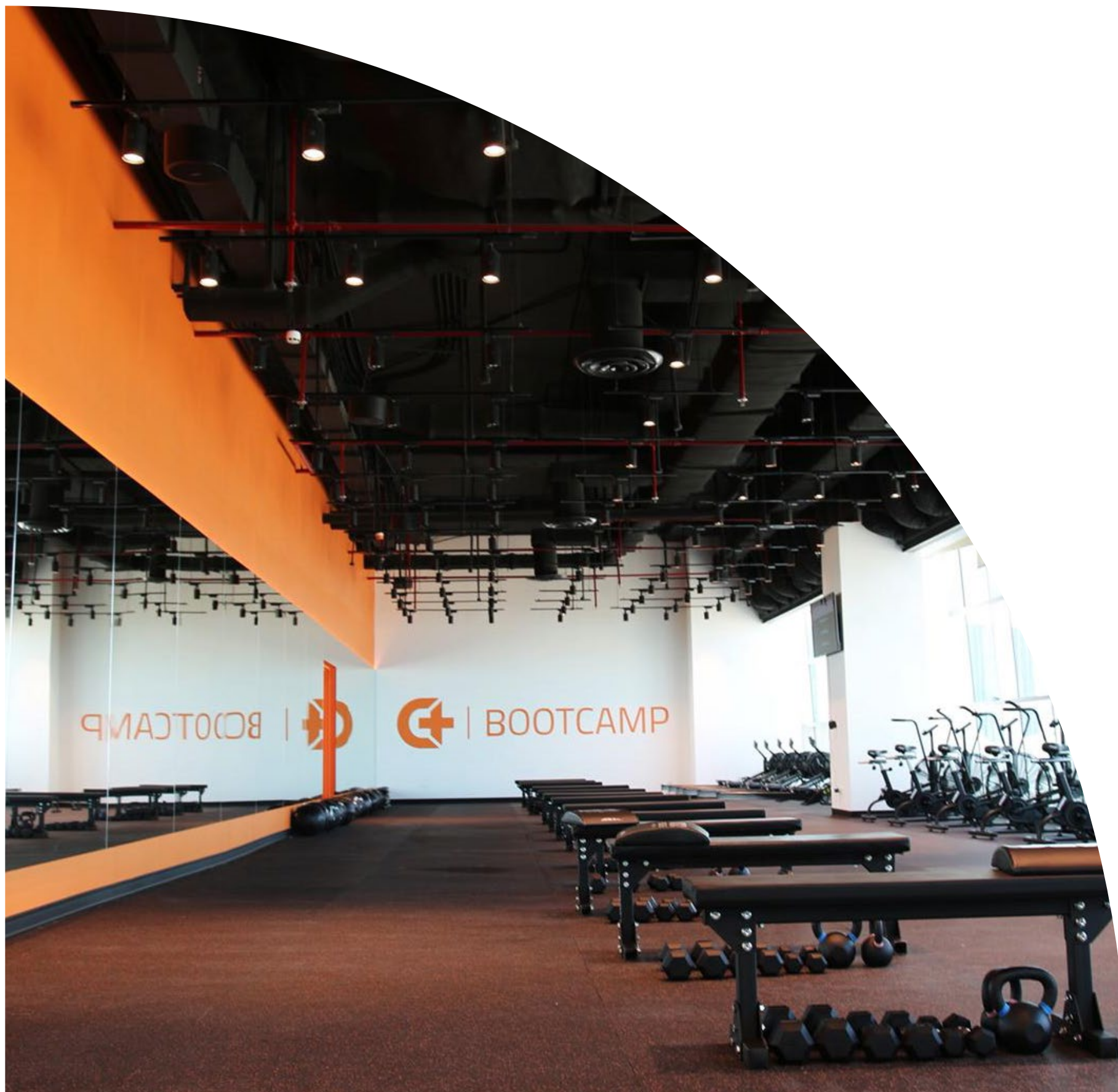


Levo is a physical therapy and strength training gym located in the heart of Kuwait City. The venue required a large open training area that had to be future-proofed for multiple purposes, an administrative space, and massage rooms for manual therapy and dry needling.

The design approach was minimal, allowing for maximum functionality and flexibility. The main focus was on the ceiling where the lights play an important role in creating the identity of the gym and to catch the attention of passersby in the streets below. To optimize the Levo's open space, we tucked away admin office and massage rooms behind the reception area.







Circuit Plus



Circuit Plus is a market leader in the functional fitness industry in Kuwait. They have chosen a location in the heart of Kuwait City for their a female only training facility. The design concept was driven by the radial structural grid that dictated the distribution and size of the program.

The main feature of this space is the circular reception desk. The desk creates a compression and then release point that defines the central area.





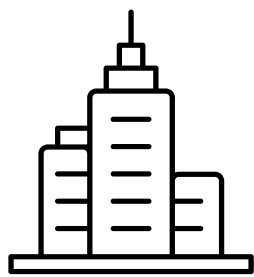
Flare Fitness



The Jabriya branch is the largest facility by Flare. The objective was to create a multidiscipline fitness facility catered to females. The 600 sqm facility boasts a pool, salon, juice bar, massage therapy rooms, a yoga studio, and 2 large workout areas.

The industrial image of flare fitness was preserved in the workout areas. The Reception and lounge were elevated with polished stone floors, greenery, and wood paneled ceilings.





Offices

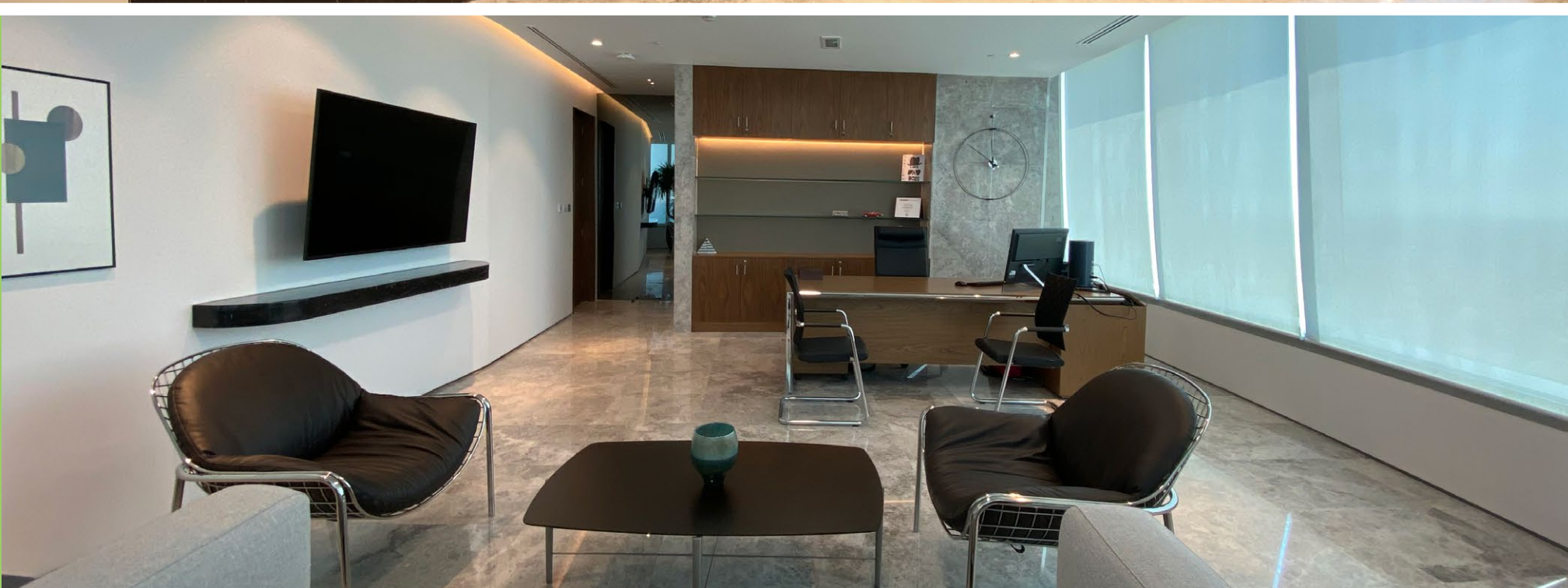


Astrolabe



Head office of astrolabe holding company in kuwait city





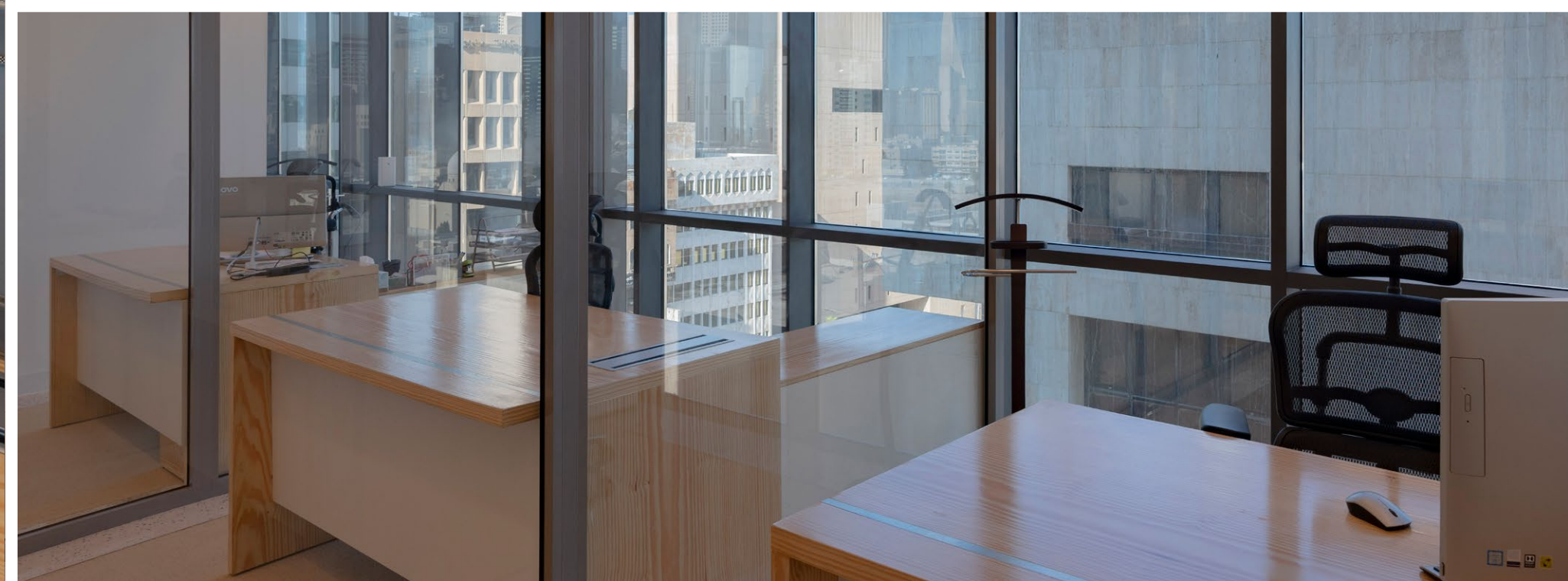


AlDhahiya Juice



AlDhahiya Juice is a well-known brand that managed to associate itself with modern Kuwaiti culture. The owners decided it was time for them to have their headquarters in Kuwait City. This location would allow them to manage their business and provide a comfortable working environment for the team.

Divided by glass partitions, natural light can flow to the center which helps boost the team's productivity and morale. To allow different divisions of the business to operate without interruptions, the floor design has walkways made from terrazzo and the working areas were carpeted to control acoustics. Patterns were chosen as an homage to AlDhahiya Juice's humble beginnings.





Swish Office



Swish head office in kuwait city



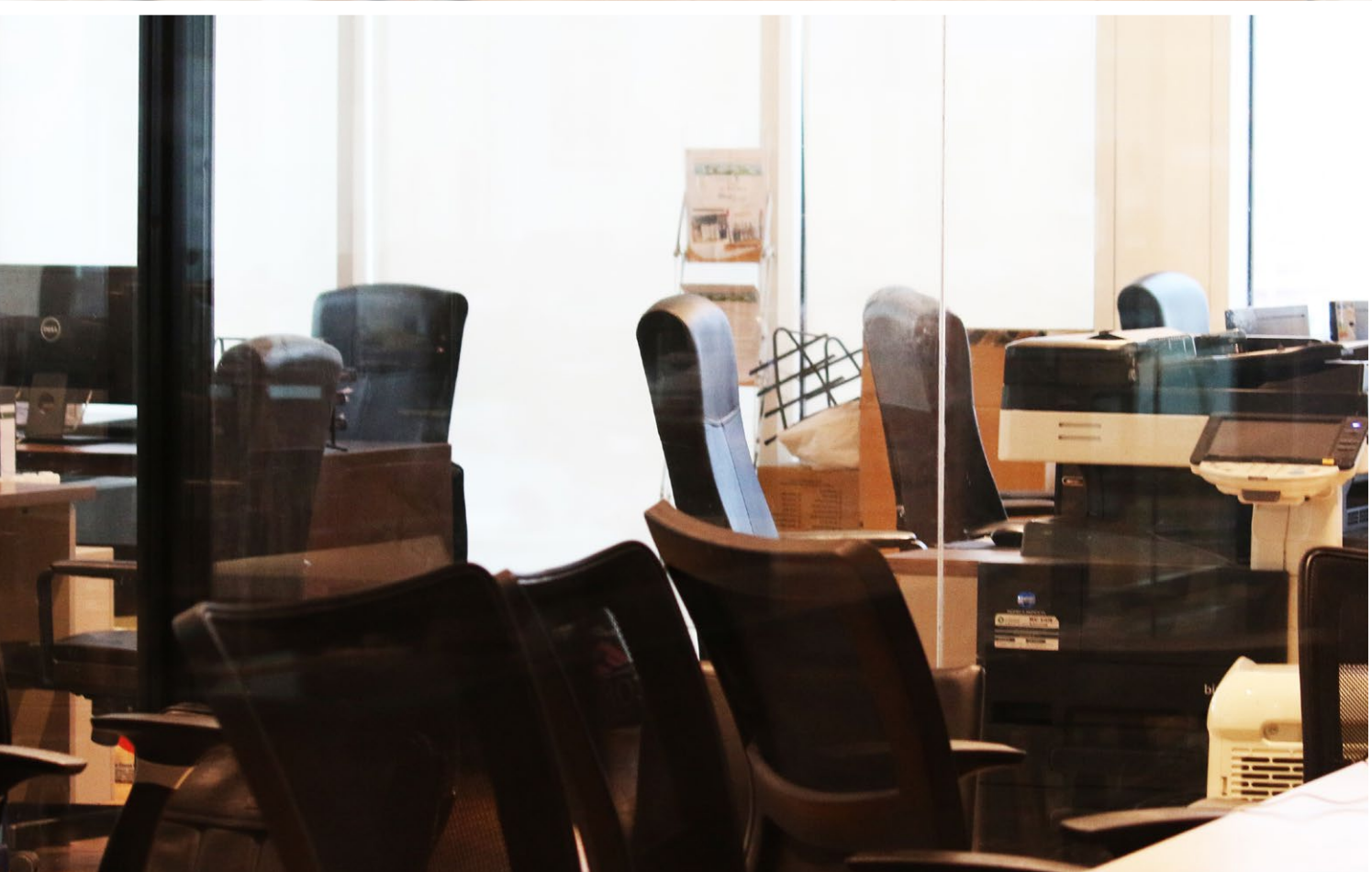


Trolley Office



The objective was to create a professional office that reflected the corporate feel of the brand, while still maintaining the young playful spirit of the client.

The answer was black aluminum framed glass partitions that let light penetrate into the center of the space. Panoramic views of the city and the sea can be enjoyed by everyone.





Retail

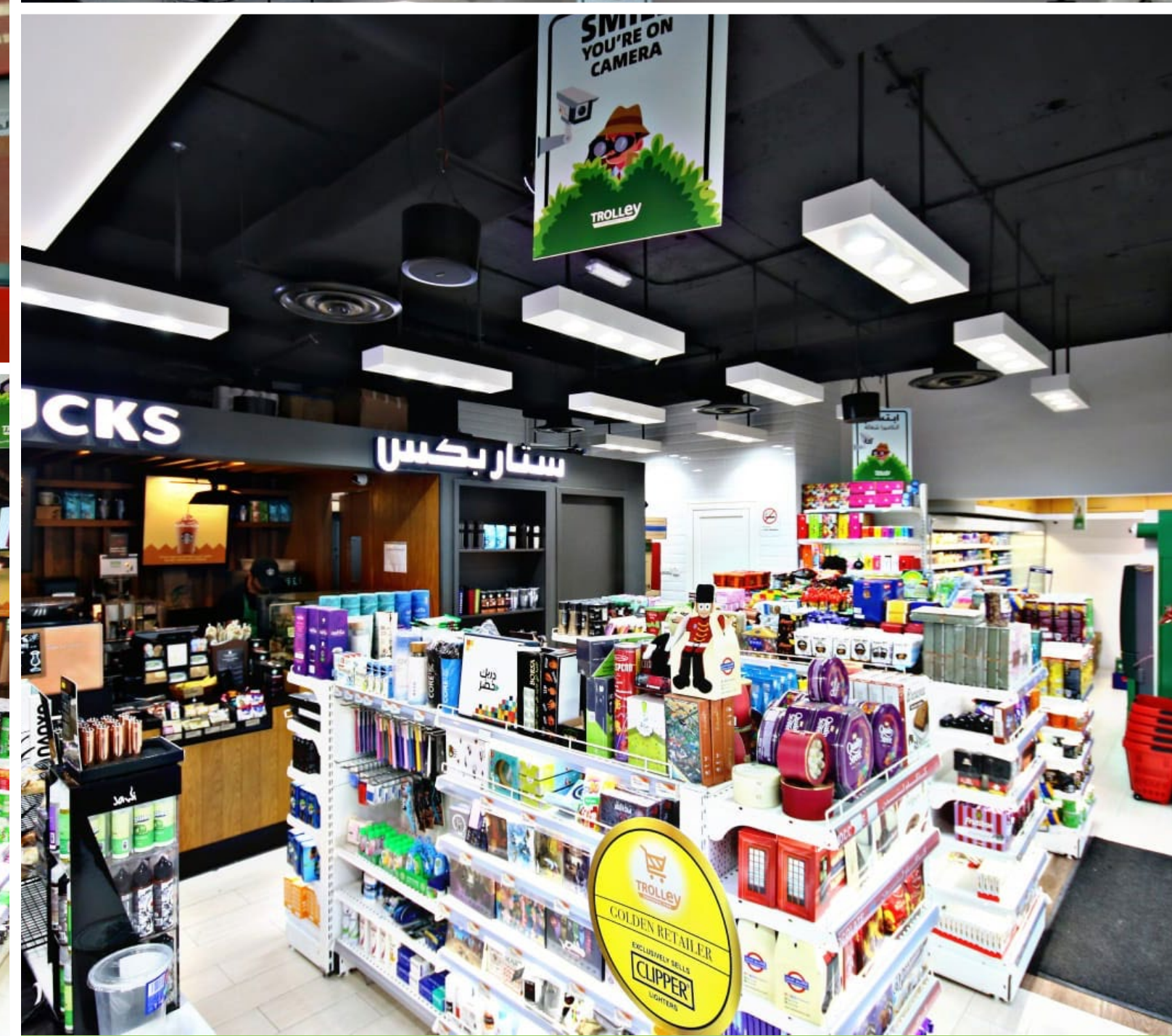


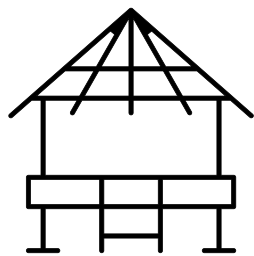
Trolley Stations



The design of trolley stations was based on customer behavior and movement throughout the space. This resulted in the production of Trolley's design manual that is used today to construct and design all of Trolley's Stations.

Bright materials like white subway tiles, custom made luminaires, and the exposed ceiling create a fun and unique experience for consumers.





Pavilions



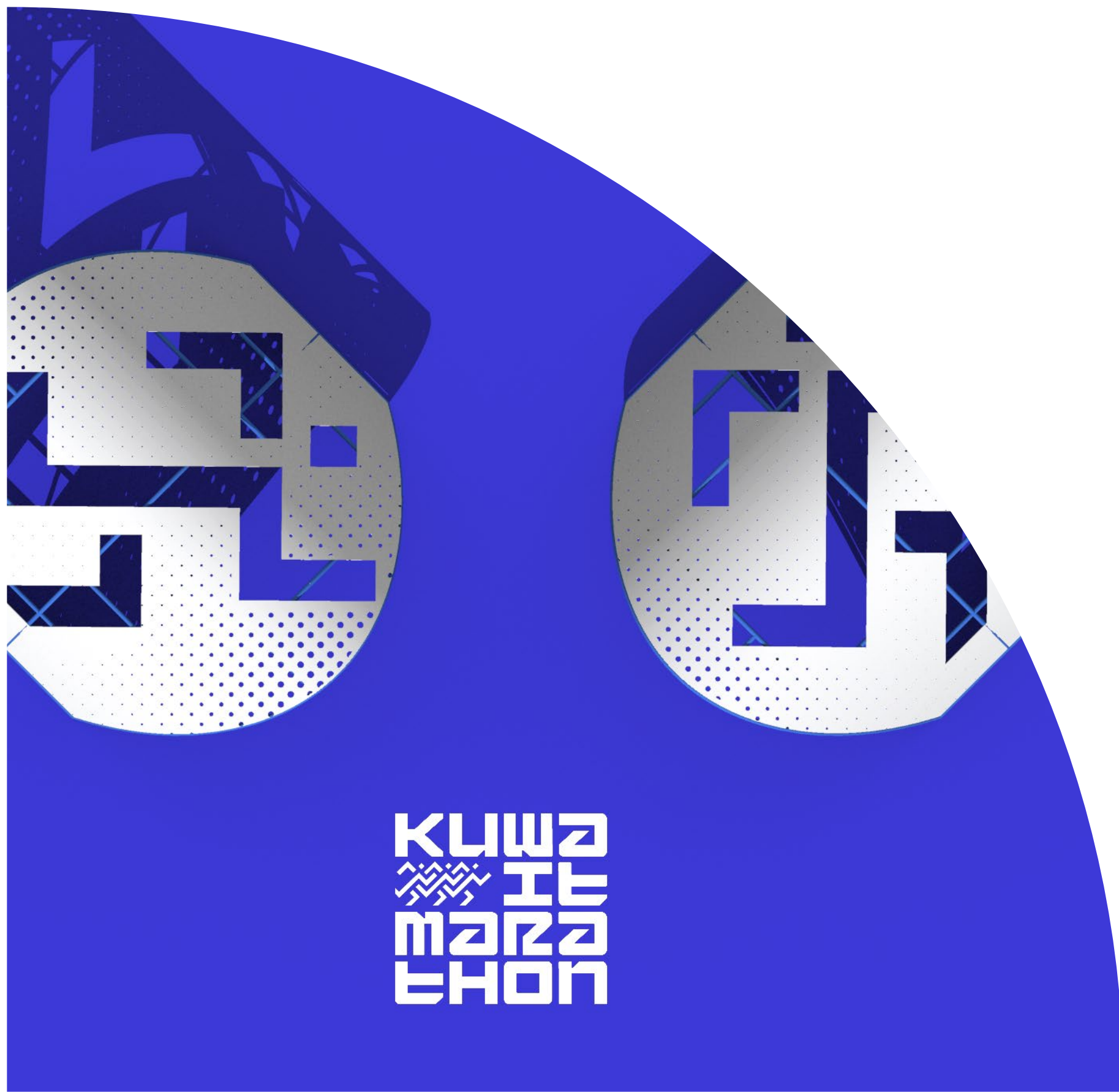
AA pavilion



This pavilion is the result of a workshop conducted by the AA visiting school from London for architecture students in Kuwait University.

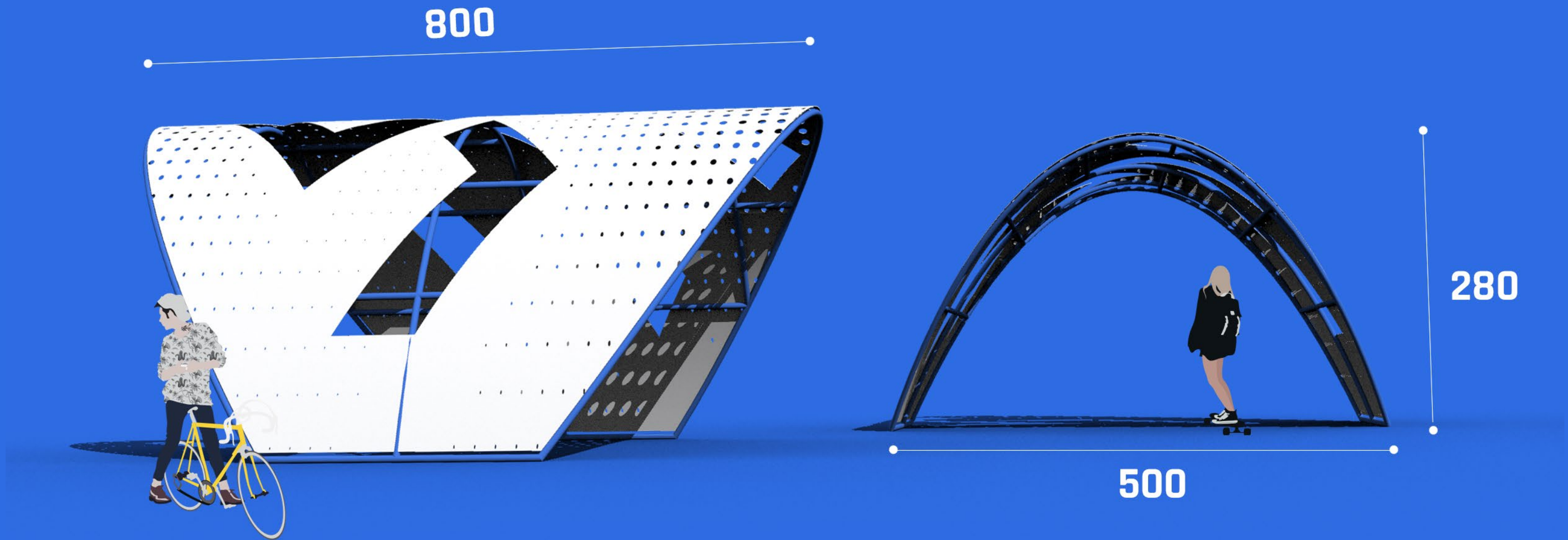
We were the fabrication partner for the pavilion. The pavilion showcases digital design and fabrication strategies for incorporating site specific information into architecture - with a complex skin directly informed by the light levels of the surroundings.





KUWAIT
MARATHON

**Kuwait
Marathon**



The objective was to design and construct two pavilions for the Kuwait Marathon 2019. The pavilions were inspired by Kuwait Marathon logo. The pavilions were constructed from a curved steel frame with perforated aluminum panels.

The perforations get larger near eye level and shrink as they reach the top. The concept was to create shading for the race participants while also filtering light through.

